

‘TIMES HAVE CHANGED’

NAOMI HOBSON

Solo Exhibition | 13 Oct - 3 Nov 2018

ARTIST STATEMENT

This body of work is my perspective on the changed landscape of my sea country. My father's country on the East Coast of Cape York Peninsula. My aim is to raise awareness of the dramatic social and environmental changes that have taken place known as dispossession and climate change.

Being inspired by the patterns of nature and the energy, colours and the spaces within the land/sea scapes I have so much to explore on the canvas and these creations is my way of dealing with what is going on in my world around me.

My father's sea country is largely void of people now. We travel down as often as time and season's permit and as I see another small sandhill disappear and a little less life on our large-scale reefs, I'm still in awe of the sheer beauty and in these works I'm capturing what is present.

When I manipulate the paint, I can't help but be drawn by exotic tropical life, my culture that still holds the stories for the land and our vibrant, bold and captivating colours on the beaches of my father's country.

ABOUT THE ARTIST

Naomi Hobson lives, works in her hometown of Coen. It is a small township of 350 people, a remote community of Far North Queensland, 580 km north of Cairns, at the bottom of the McIlwraith ranges (part of the Great Dividing Range) surrounded by the east coast of Cape York, rainforest and open country. Her family's connection is to the lands around



Coen and Lockhart River but also extend also to distant other communities in the whole Cape York (such as in Aurukun and Hopevale). Naomi finds her inspirations through all these connections to create dynamic and eye catching works. She is unreserved in her use of colour, the depth and variety of which always gives you something more to look at. Each painting tells of both her and her family's social and political history, connecting her identity to that of the people who have come before her. Her work shows an abstract connection to this history and the land; colours of sunrises are recaptured on canvas, and the contours of the McIlwraith Range make recurring appearances in her paintings.

1.



When The Tide Goes Out, 2018

210cm x 210cm,
Acrylic on Canvas,
SO4153

\$18,500.00

Its early morning, the sea is glassy calm; very low tide... I observed the different shades of colours on the calm waters. A relaxing view of the underwater life. Its aesthetic beauty and the natural charm. The reef has this amazing colour pattern made by the retreating tide. You can find amazing life forms these animals and plants take many shapes and forms and have adapted to live together harmoniously.

2.



Raidant Sand Dunes, 2018

100cm x 100cm,
Acrylic on Canvas,
SO4146

\$4,400.00

This is a place near my home on the East Coast of Cape York where the sun warms the sand. In the late afternoons you can sit in the dunes and watch the tide come in. The tide coming in on to the sand and the water creating small puddles in the sand.

3.



Sunset On The Harbour, 2018

100cm x 150cm,
Acrylic on Canvas,
SO4148

\$6,500.00

In the late afternoon the harbour is light and warm with a soft kiss of the setting sun. Shadow and sunlight balance out the day and life begin scurrying in with the tide.

4.



Warm Days Cool Nights, 2018

100cm x 100cm,
Acrylic on Canvas,
SO4152

\$4,400.00

The whole sky becomes a deep rich orange over the dark green sea. Its getting cooler as the night approaches over the water. Everything is still and crisp but there is still a lot of movement and feelings expressed beneath the surface.

5.



Shallow Waters and Sandbanks, 2018

100cm x 150cm,
Acrylic on Canvas,
SO4150

\$6,500.00

It is a busy day down at the harbour. I was attracted to the busy promenade, which was teeming with people, markets and boats all doing their thing, going about their business adding to the colour. Inspired by a trip to Sydney where my accommodation had full view of the Harbour.

6.



Story Place, 2018

100cm x 100cm,
Acrylic on Canvas,
SO4147

\$4,400.00

At a certain time of the year the lagoon gets an alga that gives a beautiful peach tinge that in the early morning seems to reflect over the whole area. It changes with the different day lights and keeps revealing new wonderful views. It has a life of its own.

7.



Little Reef Near The Coast, 2018

100cm x 100cm,
Acrylic on Canvas,
SO4151

\$4,400.00

A favourite location on my sea country. When the time of day the colours changes from the reflection of the sun. Everything is bright and you can see the bottom of the ocean. Its so vibrant, the energy of the reef in July comes out to play.

8.



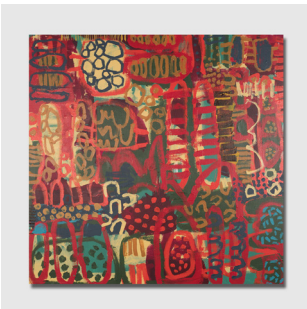
Shallow Waters and Sandbanks, 2018

100cm x 100cm,
Acrylic on Canvas,
SO4149

\$4,400.00

A shallow tide reveals a sandbank island surrounded by coral reefs. A playfulness returns to my seascapes as I contemplate on the colours reflecting from the sun on to the sand and water.

9.



First Light On Frenchman Reef, 2018

100cm x 100cm,
Acrylic on Canvas,
SO4154

\$4,400.00

The start of a warm day. This piece represents the warmth and light at daybreak on the reef. The sun is up and the ocean in the morning is a clam sea, a relaxing view of the underwater; where life is full.